



Ollerton Green, London, E3

BUTLER & STAG





**Guide Price - £500,000 to £550,000**  
**Nestled in the vibrant neighborhood of Bow, adjacent to the picturesque Victoria Park, this three-bedroom split-level maisonette offers a delightful blend of modern comfort and classic charm. Boasting a prime location and a host of desirable features, this residence presents an enticing opportunity for those seeking a quintessential London living experience.**



## Leasehold

- Three Bedroom Maisonette
- Naturally Light Throughout
- South Facing Private Balcony
- Next Door To Victoria Park
- Long Lease
- Close To Amenities
- EWS1 Compliant
- Decorated Beautifully

**Three Bedrooms:** This spacious maisonette encompasses three well-appointed bedrooms, providing ample space for relaxation and privacy. Whether it's a cozy sanctuary for the family or a versatile home office, each room offers flexibility to suit various lifestyle needs.

**South-Facing Private Balcony:** Step outside onto your very own south-facing private balcony and bask in the warmth of the sun while enjoying picturesque views of the surrounding neighborhood. Perfect for alfresco dining, morning coffee, or simply unwinding amidst the tranquility of the outdoors.

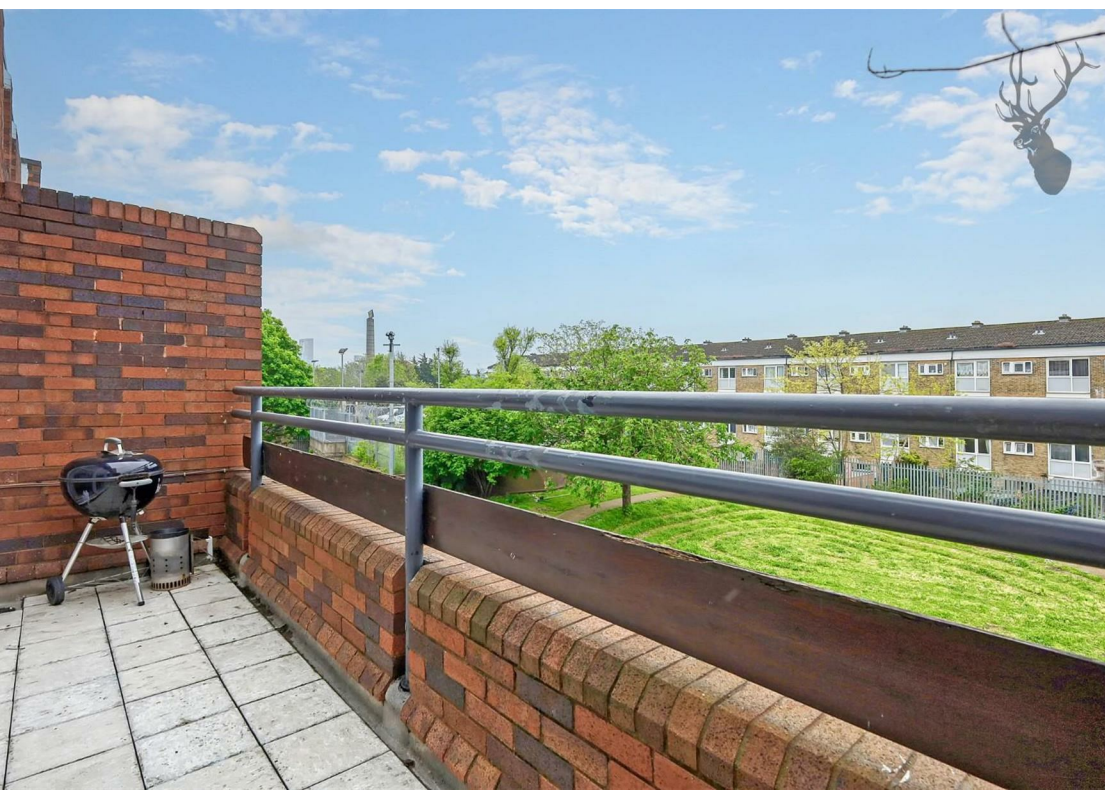
**Proximity to Victoria Park:** Situated just steps away from Victoria Park, residents have direct access to one of London's most beloved green spaces. Whether it's leisurely strolls, recreational activities, or picnics with family and friends, the park offers an array of amenities and attractions for all ages to enjoy.

**Convenient Location:** With excellent transport links and a myriad of local amenities nearby, including shops, restaurants, cafes, and schools, this maisonette ensures convenience and accessibility at every turn. Explore the vibrant streets of Bow or venture into central London with ease, thanks to the proximity of nearby tube stations and bus routes.

Combining a sought-after location, timeless design elements, and modern comforts, this three-bedroom split-level maisonette offers a coveted urban lifestyle in the heart of Bow. Whether you're a young family, professionals, or investors, this property presents a rare opportunity to own a slice of London living at its finest. Don't miss your chance to make this charming residence your own and experience the best that city living has to offer.



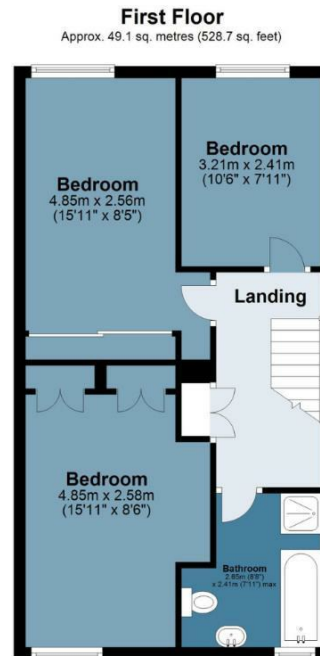
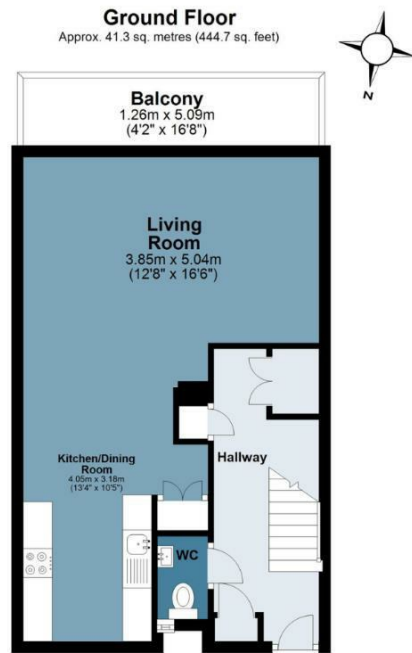






## Ollerton Green

Approx. Gross Internal Area 90.4 sq. metres (973.4 sq. feet)



Measurements are approximate and for illustration purposes only. While we do not doubt the accuracy and completeness, we advise you conduct a careful independent assessment of the property to determine monetary value  
© @modephoto.uk www.modephoto.co.uk

**BUTLER & STAG**

**BUTLER & STAG**

☎ 020 8102 1236

🏠 508 Roman Road, Bow, London, E3 5LU

✉ bow@butlerandstag.com

[www.butlerandstag.uk](http://www.butlerandstag.uk)

IMPORTANT NOTICE - These particulars have been prepared in good faith and they are not intended to constitute part of an offer or contract. We have not performed a structural survey on this property and the services, appliances and specific fittings have not been tested. All photographs, measurements, floor plans and distances referred to are given as a guide and should not be relied upon.